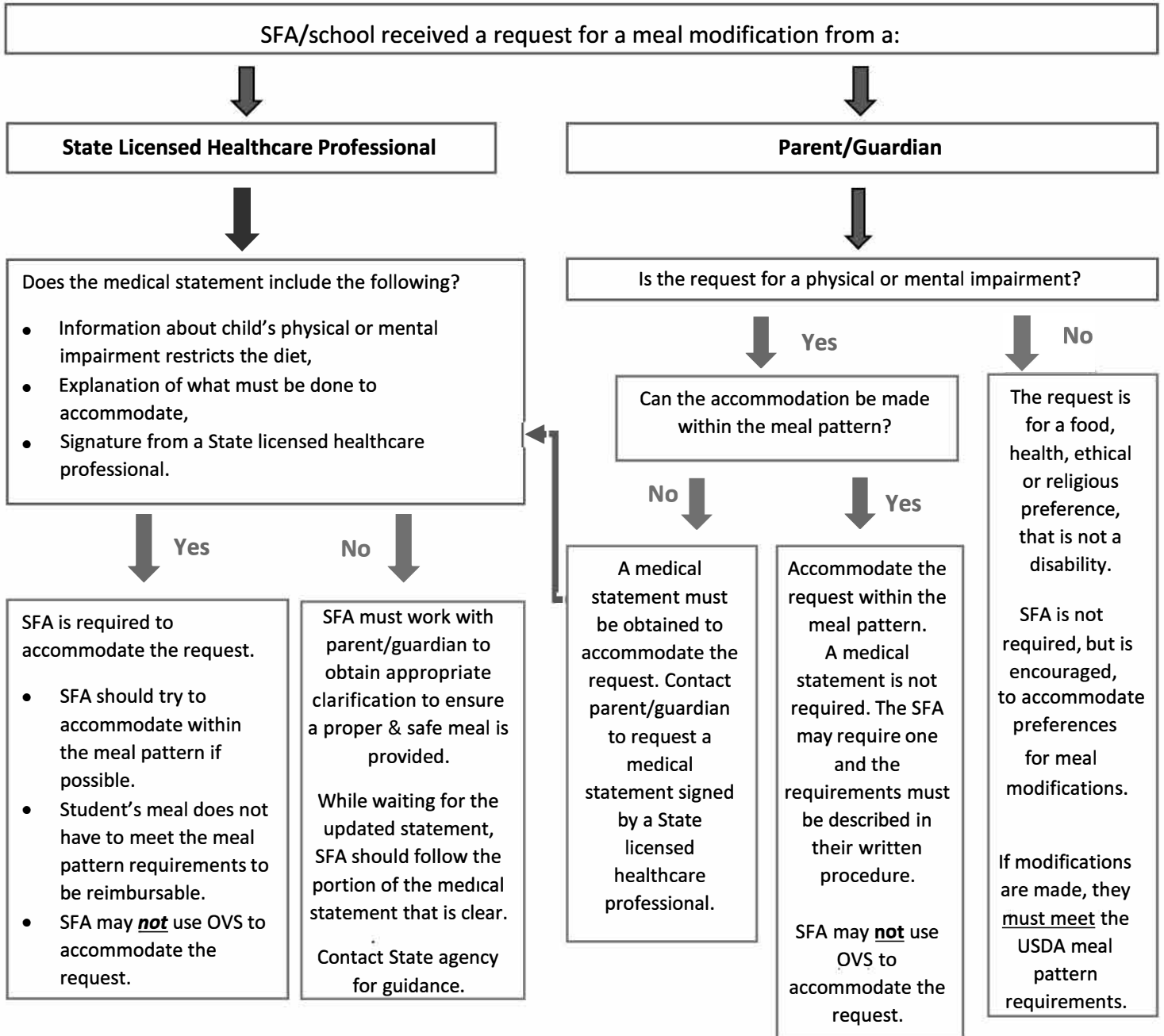


# Accommodating Requests for Meal Modifications in the School Nutrition Programs

Use this decision tree when special dietary requests are received. Document the process.



## Citations and References:

1. [2017 Accommodating Children with Disabilities in the School Meal Programs Guide.](#)
2. [SP 26-2017 Accommodating Disabilities in the School Meal Programs: Guidance and Q&As](#)
3. [SP 59-2016 Policy Memorandum on Modifications to Accommodate Disabilities in the School Meal Programs.](#)

